



LINDAU
NOBEL LAUREATE
MEETINGS

71st Lindau Nobel Laureate Meeting

Programme

26 June – 1 July 2022

Sessions

Scientific sessions,
social functions,
partner events,
networking breaks

Speakers

Nobel Laureates,
young scientists,
invited experts,
moderators

Access

Guidance to all
online viewing
and participation
options

Background

Everything else
there is to know
for a successful
meeting

ON-SITE

Access to sessions may depend on participant type and pre-registration.

Please see the **on-site programme (p. 8)** and your **personal agenda** for details.

Where Q&A is offered, you may use microphones provided or ask your questions online at qa.lindau-nobel.org

ONLINE

Online participation and interaction is available for registered participants.

Please see the **online programme (p. 10)** for details.

Panel Discussions and Online Open Exchanges offer live video interaction. All other sessions are offer text questions and chat interaction.

You can follow the programme and ask questions at live.lindau-nobel.org

PUBLIC

Selected sessions are available for the public.

Please see the **online programme (p. 10)** for details.

The public programme is available at public.lindau-nobel.org

Scientific Programme	8
About the Meetings	47
Online Offers	52
Supporters	54
Maps	60
Good to Know	68



Welcome

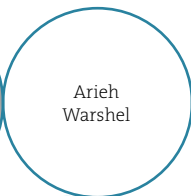
Pleasure to meet you. Finally! After two years of online only encounters, we are excited to welcome you to the beautiful island of Lindau. This is where the “Lindau spirit” happens. This is where the “Educate. Inspire. Connect.” is meant to take place.

Together, let us celebrate the 71st Lindau Nobel Laureate Meeting. Bridging borders, nationalities, ethnicities, languages, religions in times where it is needed, possibly more than ever before. Let us use this gathering in the sense of Alfred Nobel: “For the benefit of humankind”.

Louis J. Ignarro



Arieh Warshel



Randy W. Schekman



Martin Chalfie



Richard R. Schrock

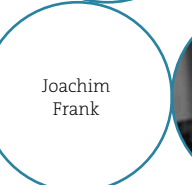
Venki Ramakrishnan



William G. Kaelin, Jr.



Donna Strickland



Joachim Frank

Brian P. Schmidt

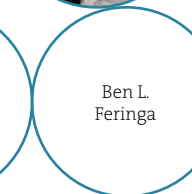


Avram Hershko



Ada E. Yonath

Ben L. Feringa



Aaron Ciechanover



Brian K. Kobilka

Benjamin List

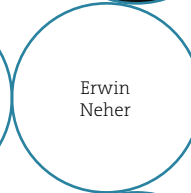


Dan Shechtman



Hartmut Michel

Erwin Neher



Robert Huber



Peter Agre



Michael Levitt



Elizabeth H. Blackburn



Stefan W. Hell



Steven Chu



Efm Zelmanov



Jean-Marie Lehn



Sir Konstantin Novoselov



Kurt Wüthrich

William E. Moerner



Rudolph A. Marcus



Time (Zones)	Sunday, 26 June	Monday, 27 June	Tuesday, 28 June	Wednesday, 29 June	Thursday, 30 June	Friday, 1 July
07 B13 / T14 / C15 D10 ³⁰ / N01 / S22 ⁺		Partner Events • Austrian Federal Ministry of Education • C5 Capital	Break Morning Workout	Partner Events • Mars, Incorporated • Rolex SA	Break Morning Workout	
08 B14 / T15 / C16 D11 ³⁰ / N02 / S23 ⁺				Science Breakfast Scientific Collaboration in Challenging Times Bruce, Schekman, Vetterli	Partner Event • Toyota Mobility Foundation	Break Morning Workout
09 B15 / T16 / C17 D12 ³⁰ / N03 / S24 ⁺		Lecture Feringa		Next Gen Science presentations by young scientists	Lecture List	Social Event Baden-Württemberg Boat Trip to Mainau Island hosted by the State of Baden-Württemberg
10 B16 / T17 / C18 D13 ³⁰ / N04 / S01		Lecture Strickland	Lecture Kaelin		Lecture Hell	
11 B17 / T18 / C19 D14 ³⁰ / N05 / S02		Lecture Schmidt	Lecture Moerner		Lecture Lehn	
12 B18 / T19 / C20 D15 ³⁰ / N06 / S03	Opening Ceremony	Agora Talk • Frank • Ramakrishnan	Agora Talk • Ciechanover • Huber	Agora Talk • Warshel • Wüthrich	Lecture Novoselov	Panel Discussion The Diversity Challenge Güneç, Restrepo Schild, Strickland, Wittung-Stafshede
13 B19 / T20 / C21 D16 ³⁰ / N07 / S04	Reception hosted by the Bavarian State Government	Agora Talk • Agre • Ignarro	Agora Talk • Neher • Schrock	Agora Talk • Shechtman • Michel	Lecture Schekman	
14 B20 / T21 / C22 D17 ³⁰ / N08 / S05		Break Lunch Break City Reception	Break Lunch Break Laureate Lunches	Break Lunch Break Laureate Lunches	Break Lunch Break Laureate Lunches	Social Event Science Picnic on the Arboretum Lawn hosted by the Ministry of Science, Education and the Arts, State of Baden-Württemberg
15 B21 / T22 / C23 D18 ³⁰ / N09 / S06	Lecture MacMillan	Open Exchange Agre, Feringa, Frank, Ignarro, Ramakrishnan, Strickland	Panel Discussion Artificial Intelligence in Chemistry Levitt, Nigel, Paiz, Warshel	Panel Discussion Catalysis & Green Chemistry Feng, Li, MacMillan, Schrock, Serrano	Open Exchange Hell, Lehn, List, Novoselov, Schekman, Yonath	
16 B22 / T23 / C24 D19 ³⁰ / N10 / S07	Panel Discussion Trust in Science, Trust in Chemistry Boetius, Gutenthaler, Miserendino, Ramakrishnan, Schmidt	Science Walks			Life Lecture Yonath	
17 B23 / T24 / C01 ⁺ D20 ³⁰ / N11 / S08	Social Programme Opening Concert hosted by the Republic of Austria	Next Gen Science presentations by young scientists	Open Exchange Ciechanover, Huber, Kaelin, MacMillan, Moerner, Neher, Schmidt, Schrock	Open Exchange Hershko, Levitt, Michel, Shechtman, Warshel, Wüthrich	Workshop • Mentoring • Lindau Guidelines	Social Event Baden-Württemberg Boat Trip to Lindau hosted by the State of Baden-Württemberg
18 B24 / T01 ⁺ / C02 ⁺ D21 ³⁰ / N12 / S09						
19 B01 ⁺ / T02 ⁺ / C03 ⁺ D22 ³⁰ / N13 / S10	Social Programme Dinner for young scientists	Social Programme International Get-Together hosted by the United Kingdom	Social Programme Academic Partner Dinners hosted by Academic Partners	Heidelberg Lecture Zelmanov hosted by Academic Partners	Social Programme Bavarian Evening hosted by the Free State of Bavaria	
20 B02 ⁺ / T03 ⁺ / C04 ⁺ D23 ³⁰ / N14 / S11	Foundation Dinner hosted by the Foundation Lindau Nobel Laureate Meetings		Grill & Chill hosted by the Lindau Nobel Laureate Meetings and supported by the City of Lindau	Social Programme Dinner for young scientists		
21 B03 ⁺ / T04 ⁺ / C05 ⁺ D00 ³⁰ / N15 / S12						

Time Zones
The reference times on the left side are stated as Central European Summer Time (CEST).
Additional times zones are provided as smaller print.
B = Beijing (CST)
T = Tokyo (JST)
C = Canberra (AEST)
D = Delhi (IST)
N = New York (EDT/DST)
S = San Francisco (PDT/DST)
+1 = day before
+1 = day after
30+ = plus 30 minutes

* Note: All programme sessions are subject to change.

Time (Zones)	Sunday, 26 June	Monday, 27 June	Tuesday, 28 June	Wednesday, 29 June	Thursday, 30 June	Friday, 1 July
07 B13 / T14 / C15 D10 ³⁰ / N01 / S22 ⁺				<i>Science Breakfast</i> Scientific Collaboration in Challenging Times Bruce, Schekman, Vetterli		
08 B14 / T15 / C16 D11 ³⁰ / N02 / S23 ⁺						
09 B15 / T16 / C17 D12 ³⁰ / N03 / S24 ⁺		<i>Lecture</i> Feringa		<i>Next Gen Science</i> presentations by young scientists	<i>Lecture</i> List	
10 B16 / T17 / C18 D13 ³⁰ / N04 / S01		<i>Lecture</i> Strickland	<i>Lecture</i> Kaelin		<i>Lecture</i> Hell	
		<i>Lecture</i> Schmidt	<i>Lecture</i> Moerner		<i>Lecture</i> Lehn	
11 B17 / T18 / C19 D14 ³⁰ / N05 / S02		<i>Agora Talk</i> • Frank • Ramakrishnan	<i>Agora Talk</i> • Ciechanover • Huber	<i>Agora Talk</i> • Warshel • Wüthrich	<i>Lecture</i> Novoselov	<i>Panel Discussion</i> The Diversity Challenge Güncenc, Restrepo Schild, Strickland, Wittung-Stafshede
12 B18 / T19 / C20 D15 ³⁰ / N06 / S03	<i>Opening Ceremony</i>				<i>Lecture</i> Schekman	
		<i>Agora Talk</i> • Agre • Ignarro	<i>Agora Talk</i> • Neher • Schrock	<i>Agora Talk</i> • Shechtman • Michel	<i>Life Lecture</i> Yonath	
13 B19 / T20 / C21 D16 ³⁰ / N07 / S04						<i>Closing Ceremony</i>
14 B20 / T21 / C22 D17 ³⁰ / N08 / S05						
15 B21 / T22 / C23 D18 ³⁰ / N09 / S06	<i>Lecture</i> MacMillan					
	<i>Panel Discussion</i> Trust in Science, Trust in Chemistry Boetius, Gutenthaler, Miserendino, Ramakrishnan, Schmidt	<i>Open Exchange Online</i> Chalfie	<i>Panel Discussion</i> Artificial Intelligence in Chemistry Levitt, Nigel, Paiz, Warshel	<i>Panel Discussion</i> Catalysis & Green Chemistry Feng, Li, MacMillan, Schrock, Serrano		
16 B22 / T23 / C24 D19 ³⁰ / N10 / S07						
17 B23 / T24 / C01 ⁻¹ D20 ³⁰ / N11 / S08		<i>Next Gen Science</i> presentations by young scientists	<i>Open Exchange Online</i> Chu, Kobilka	<i>Open Exchange Online</i> Blackburn, Marcus	<i>Workshop</i> • Mentoring • Lindau Guidelines	
18 B24 / T01 ⁻¹ / C02 ⁻¹ D21 ³⁰ / N12 / S09						
19 B01 ⁻¹ / T02 ⁻¹ / C03 ⁻¹ D22 ³⁰ / N13 / S10	<i>Social Programme</i> Online Meet-Up	<i>Social Programme</i> International Get-Together hosted by the United Kingdom <i>[Programme Part]</i>	<i>Social Programme</i> Networking Workshop	<i>Heidelberg Lecture</i> Zelmanov	<i>Social Programme</i> Bavarian Evening with Brian Malow hosted by the Free State of Bavaria	
20 B02 ⁻¹ / T03 ⁻¹ / C04 ⁻¹ D23 ³⁰ / N14 / S11						
21 B03 ⁻¹ / T04 ⁻¹ / C05 ⁻¹ D00 ³⁰ / N15 / S12						

Sessions colored in orange are publicly available at public.lindau-nobel.org

Time Zones
The reference times on the left side are stated as Central European Summer Time (CEST).
Additional times zones are provided as smaller print.
B = Beijing (CST)
T = Tokyo (JST)
C = Canberra (AEST)
D = Delhi (IST)
N = New York (EDT/DST)
S = San Francisco (PDT/DST)
-1 = day before
+1 = day after
30 + plus 30 minutes

* Note: All programme sessions are subject to change.

Opening Ceremony

11.30

Inselhalle

Opening of the 71st Lindau Nobel Laureate Meeting**Welcome***Countess Bettina Bernadotte, President of the Council***Greetings from Stockholm***Laura Sprechmann, CEO of Nobel Prize Outreach, Sweden***Welcome Speech***Bettina Stark-Watzinger, German Federal Minister of Education and Research***Sketches of Science***Volker Steger, Adam Smith & Countess Bettina Bernadotte***Programme Preview***Wolfgang Lubitz, Scientific Chairperson 71st Lindau Nobel Laureate Meeting**Valeria Nicolosi, Scientific Chairperson 71st Lindau Nobel Laureate Meeting**Pernilla Wittung-Stafshede, Scientific Chairperson 71st Lindau Nobel Laureate Meeting***Bavarian Greetings and Invitation to the Reception***Markus Blume, Bavarian State Minister of Science and the Arts, Bavaria***Master of Ceremony: Adam Smith***Nobel Prize Outreach, Sweden***Social Event**

13.00

Inselhalle

**Reception***hosted by the Bavarian State Government***Lecture**

14.30

Inselhalle

The Path to Invention and Discovery in Catalysis

Sir David W.C. MacMillan

*Princeton University, United States of America***Panel Discussion**

15.00

Inselhalle

Trust in Science, Trust in Chemistry

Antje Boetius

Alfred Wegener Institute, Germany

Sophie Marie Gutenthaler

Ludwig Maximilian University of Munich, Germany

María Clara Miserendino

Universidad Nacional de Córdoba, Argentina

Venki Ramakrishnan

MRC Laboratory of Molecular Biology, United Kingdom

Brian P. Schmidt

The Australian National University, Australia

Moderator: Adam Smith

Nobel Prize Outreach, Sweden

16.30

Break**Opening Concert**

17.00

Stadttheater

Concert*hosted by the Republic of Austria*

Ensemble of the Vienna Philharmonic

Welcome*Martin Polaschek, Austrian Federal Ministry of Education, Science and Research***Social Event**

19.00 - 22.00

Inselhalle

**Dinner**

Access: young scientists

Online Event

19.00 - 22.00

wonder.me

Online Meet-upSee live.lindau-nobel.org for details.

Chamber Music

VIENNA PHILHARMONIC

Opening Concert

Greetings by Martin Polaschek


Federal Minister of Education, Science and Research, Austria



Morning Workout Activate

07.00
Oscar-Groll-Anlage

Partner Event

07.00
Hotel Bayer. Hof


Chemical Data Provide Information About Astronomical Events in the Geological Record


hosted by the Austrian Federal Ministry of Education, Science and Research

W.E. Moerner
Stanford University, United States of America

Hipassia Moura
University of Konstanz, Germany

Moderator: Christian Köberl
University of Vienna, Austria

Partner Event

07.00
Hotel Bayer. Hof


New Outlook on Nuclear Fusion to Combat Climate Change

hosted by C5 Capital

Ian Chapman
UK Atomic Energy Authority (UKAEA), United Kingdom

Tom Scott
UK Atomic Energy Authority (UKAEA) and Royal Academy of Engineering Research Chair in Advancing the Fusion Energy Fuel Cycle, United Kingdom

David Kingham
Executive Vice Chairman and a Co-Founder of Tokamak Energy, United Kingdom

Moderator: André Pienaar
C5 Capital, United Kingdom

Lecture

09.00
Inselhalle

The Joy of Discovery

Ben L. Feringa
University of Groningen, The Netherlands

Lecture

09.30
Inselhalle

Generating High-Intensity, Ultrashort Optical Pulses

Donna Strickland
University of Waterloo, Canada

Lecture

10.00
Inselhalle

Astronomy in 2022

Brian P. Schmidt
The Australian National University, Australia

10.30 **Break**

Agora Talk

11.00
Inselhalle

The Quest for the Structure of the Ribosome: Nature's Ancient Protein Factory

Venki Ramakrishnan
MRC Laboratory of Molecular Biology, United Kingdom

Moderator: Adam Smith
Nobel Prize Outreach, Sweden

Agora Talk

11.00
Inselhalle

Biological Molecules Captured in Motion by Cryo-EM

Joachim Frank
Columbia University, United States of America

Moderator: Valeria Nicolosi
Trinity College Dublin, Ireland

11.45 **Break**

Agora Talk

12.15
Inselhalle

Dr. NO – The Discovery That Led to a Nobel Prize and Viagra

Louis J. Ignarro
University of California, United States of America

Moderator: Adam Smith
Nobel Prize Outreach, Sweden


Agora Talk

12.15
Inselhalle

Aquaporin Water Channels and Medical Science in Africa

Peter Agre
Johns Hopkins Malaria Research Institute, United States of America

Moderator: Stefan Kaufmann
Max Planck Institute for Infection Biology, Germany

13.00
Inselhalle


Lunch Break

hosted by United Kingdom

Science Walks

14.45

Science Walks

Meeting Point: main entrance of the Inselhalle.

Access: Nobel Laureates, young scientists with online pre-registration only.

Please see your personal agenda for details.

Open Exchange **Open Exchange with Peter Agre**

15.00 Discussion with young scientists
Inselhalle

Open Exchange **Open Exchange with Ben L. Feringa**

15.00 Discussion with young scientists
Hotel Bayer. Hof

Open Exchange **Open Exchange with Joachim Frank**

15.00 Discussion with young scientists
Hotel Bayr. Hof

Open Exchange **Open Exchange with Louis J. Ignarro**

15.00 Discussion with young scientists
Inselhalle

Open Exchange **Open Exchange with Venki Ramakrishnan**

15.00 Discussion with young scientists
Inselhalle

Open Exchange **Open Exchange with Donna Strickland**

15.00 Discussion with young scientists
Inselhalle

Open Exchange Online **Open Exchange Online with Martin Chalfie**

15.00 Discussion with young scientists
Host: Suzanne Devkota
Cedars-Sinai Medical Center, United States

See live.lindau-nobel.org for details.

16.30 **Break**

Next Gen Science **Research by Young Scientists**

17.00 **Light-Directed Synthesis of Complex Nucleic Acid Libraries**
Erika Schaudy
University of Vienna, Austria

Models and Measurements to Decipher Initiation Modes of Operonic mRNA Translation
Yonatan Chemla
MIT Massachusetts Institute of Technology, United States of America

Developing Covalent Biologics Through Genetic Code Expansion for Cancer Therapeutics and Diagnostics
Paul Klauer
University of California, San Francisco, United States of America

Therapeutics strategies for erythropoietic protoporphyria (EPP)
François Halloy
University of Oxford, United Kingdom

Sustainable Biodegradable Materials and Devices Integrating Energy Conversion and Storage
Abdelaziz Gouda
University of Toronto, Canada

Turning Waste Commodity Plastics Into Resources for a Sustainable Future
Jason Lim
Institute of Materials Research and Engineering (IMRE), Singapore

Smart Rust Makes Clean Water
Lukas Müller
Friedrich-Alexander-University Erlangen-Nuremberg, Germany

Moderator: Christoph Schumacher
Alumni & Community Manager, Lindau Nobel Laureate Meetings, Germany

18.30 **Break**



International Day

UNITED KINGDOM

We are honoured that the United Kingdom
is hosting the 2022 International Day of
the Lindau Nobel Laureate Meetings.

Social Event

19.00 - 23.30

Inselhalle

**International Get-Together***hosted by United Kingdom***Master of Ceremony: Adam Smith***Nobel Prize Outreach, Sweden***Welcome***Countess Bettina Bernadotte, President of the Council***Welcoming Remarks***Andre Pienaar, C5 Capital, United Kingdom***Welcome Address***Sir Peter Bruce, Physical Secretary & Vice President, Royal Society, United Kingdom***Science in the United Kingdom***Sir Peter Bruce, Andre Pienaar, Venki Ramakrishnan & Adam Smith***Cultural Performance***The First Leiblach Valley Pipes and Drums**The Bodensee Players***British Dinner****Morning Workout Innervate**

07.00

Oscar-Groll-Anlage

Partner Event

07.00

Forum am See

**How Can Chemistry Unlock Meaningful Insights in Health and Nutrition?***hosted by Mars, Incorporated*

Aaron Ciechanover

Technion - Israel Institute of Technology, Israel

Lena Neufeld

Tel Aviv University, Israel

Hagen Schroeter

Chief Science Officer at Mars Edge, United States of America

Moderator: Adam Smith

*Nobel Prize Outreach, Sweden***Partner Event**

07.00

Hotel Bayer. Hof

**Excellence in Science and Exploration***hosted by Rolex SA*

Gina Moseley

University of Innsbruck, Austria

Brian P. Schmidt

The Australian National University, Australia

Moderator: Faith McLellan

*Scientific writer and editor, Switzerland***Lecture**

09.30

Inselhalle

The VHL Tumor Suppressor Protein: Insights into Oxygen Sensing and Intercellular Communication

William G. Kaelin, Jr.

*Harvard Cancer Center, United States of America***Lecture**

10.00

Inselhalle

What Can Single Molecules Tell Us About Coronavirus RNA and Cryo-Electron Tomography?

W.E. Moerner

Stanford University, United States of America

10.30

Break

Agora Talk**The COVID-19 Pandemic and Bioethics**

11.00

Inselhalle

Aaron Ciechanover

Technion - Israel Institute of Technology, Israel

Moderator: Stefan Kaufmann

*Max Planck Institute for Infection Biology, Germany***Agora Talk****The Century of Vision in Molecular Biology**

11.00

Inselhalle

Robert Huber

Max Planck Institute of Biochemistry, Germany

Moderator: Wolfgang Lubitz

Max Planck Institute for Chemical Energy Conversion, Germany

11.45

Break**Agora Talk****Synaptic Plasticity: Short- and Longterm**

12.15

Inselhalle

Erwin Neher

Max Planck Institute for Biophysical Chemistry, Germany

Moderator: Stefan Kaufmann

*Max Planck Institute for Infection Biology, Germany***Agora Talk****Tungstacyclopentane Ring-Contraction Yields Olefin Metathesis Catalysts and More**

12.15

Inselhalle

Richard R. Schrock

MIT Massachusetts Institute of Technology, United States of America

Moderator: Wolfgang Lubitz

Max Planck Institute for Chemical Energy Conversion, Germany

13.00

Inselhalle

Lunch Break

13.15

Various Locations

Laureate Lunches

Access: Nobel Laureates, young scientists with online pre-registration only.

Please see your personal agenda for details.

**Panel Discussion****Artificial Intelligence in Chemistry**

15.00

Inselhalle

Michael Levitt

Stanford University, United States of America

Neo Neng Kai Nigel

National University of Singapore, Singapore

Paulina Paiz

University of California, San Francisco, United States of America

Arieh Warshel

University of Southern California, United States of America

Moderator: Gunnar Schröder

Forschungszentrum Jülich, Germany

16.30

Break**Open Exchange****Open Exchange with Aaron Ciechanover**

17.00

Inselhalle

Discussion with young scientists

Open Exchange**Open Exchange with Robert Huber**

17.00

Hotel Bayer. Hof

Discussion with young scientists

Open Exchange**Open Exchange with William G. Kaelin, Jr.**

17.00

Inselhalle

Discussion with young scientists

Open Exchange**Open Exchange with Sir David W.C. MacMillan**

17.00

Inselhalle

Discussion with young scientists

Open Exchange**Open Exchange with W.E. Moerner**

17.00

Hotel Bayer. Hof

Discussion with young scientists

Open Exchange**Open Exchange with Erwin Neher**

17.00

Hotel Bayer. Hof

Discussion with young scientists

Open Exchange**Open Exchange with Brian P. Schmidt**

17.00

Discussion with young scientists

Forum am See

Open Exchange**Open Exchange with Richard R. Schrock**

17.00

Discussion with young scientists

Hotel Bayer. Hof

Open Exchange Online**Open Exchange Online with Steven Chu**

Discussion with young scientists

*Host: Susannah Bourne-Worster**University of Bristol, United Kingdom*

17.00

Zoom

See live.lindau-nobel.org for details.**Open Exchange Online****Open Exchange Online with Brian K. Kobilka**

Discussion with young scientists

*Host: Casper de Lichtenberg**University of Copenhagen, Denmark*

17.00

Zoom

See live.lindau-nobel.org for details.

18.30

Break**Social Event****Academic Dinners**

19.00 - 22.00

upon invitation of the Academic Partners

Various Locations

Access: by invitation only

Please see your personal agenda for details.

**Social Event****Grill & Chill: Connecting Cultures**

19.00 - 22.00

upon invitation of the Lindau Nobel Laureate Meetings

Toskanapark

Access: by invitation only

Please see your personal agenda for details.

**Online Event****Networking Workshop**

19.00 - 21.00

See live.lindau-nobel.org for details.**Science Breakfast****Scientific Collaboration in Challenging Times**

07.00

hosted by Lindau Nobel Laureate Meetings

Inselhalle

Sir Peter Bruce

Physical Secretary & Vice President, Royal Society, United Kingdom

Randy W. Schekman

University of California, Berkeley, United States of America

Martin Vetterli

President, Ecole Polytechnique Fédérale de Lausanne, Switzerland

And young scientists from the audience

Moderator: Adam Smith

Nobel Price Outreach, Sweden

An aerial photograph of a coastal town at sunset. The sun is low on the horizon, casting a warm, golden glow over the water and buildings. The town is built on a hillside overlooking a harbor filled with numerous sailboats and yachts. A prominent white lighthouse stands on a small island in the water. The water reflects the golden light of the setting sun. A large, semi-transparent orange circle is overlaid on the right side of the image, containing white text.

Tonight

ACADEMIC DINNERS
GRILL & CHILL

Tuesday, June 28, 19.00 CEST

Next Gen Science Research by Young Scientists

09.00

Inselhalle

Mechanisorption: Storing Energy in Non-Equilibrium Materials Through Active Adsorption*Liang Feng**Northwestern University, United States of America***Deciphering Biochemical Amino Acid Synthesis***Robert Mayer**Université de Strasbourg, France***Accelerating Organic Synthesis with Chemical Language Models***Philippe Schwaller**École Polytechnique Fédérale de Lausanne (EPFL), Switzerland***Discovering Photochemical Reactions With Machine Learning***Julia Westermayr**University of Warwick, United Kingdom***Atomically Precise Synthesis of Single-Wall Carbon Nanotube Fragments***Han Yi**National University of Singapore, Singapore***Direct Catalytic Copolymerization of Ethylene With Carbon Monoxide to Polyethylene Materials With In-chain Ketones***Maximilian Baur**University of Konstanz, Germany***Metal Electrodes in Complex Organic Synthesis***Sebastian Beil**University of Groningen, Netherlands**Moderator: Christoph Schumacher**Alumni & Community Manager, Lindau Nobel Laureate Meetings, Germany*

10.30

Break**Agora Talk**

11.00

Inselhalle

Multi Scale and Artificial Intelligence Studies of Biological Systems*Arieh Warshel**University of Southern California, United States of America**Moderator: Pernilla Wittung-Stafshede**Chalmers University of Technology, Sweden***Agora Talk**

11.00

Inselhalle

Protein Large-Amplitude Dynamics by NMR Spectroscopy in Solution*Kurt Wüthrich**The Scripps Research Institute (TSRI), United States of America**Moderator: Valeria Nicolosi**Trinity College Dublin, Ireland*

11.45

Break**Agora Talk**

12.15

Inselhalle

Quasi-Periodic Materials – A Paradigm Shift in Crystallography*Dan Shechtman**Technion - Israel Institute of Technology, Israel**Moderator: Rainer Blatt**University of Innsbruck, Austria***Agora Talk**

12.15

Inselhalle

Structures of Intermediates of the Cytochrome C Oxidase Reaction Cycle Suggest a Revolution*Hartmut Michel**Max Planck Institute of Biophysics, Germany**Moderator: Pernilla Wittung-Stafshede**Chalmers University of Technology, Sweden*

13.00

Inselhalle

**Lunch Break**

13.15

Various Locations

**Laureate Lunches**

Access: Nobel Laureates, young scientists with online pre-registration only.

Please see your personal agenda for details.

Panel Discussion**Catalysis & Green Chemistry**

15.00

Inselhalle

Liang Feng

Northwestern University, United States of America

Jiangnan Li

University of Manchester, United Kingdom

Sir David W.C. MacMillan

Princeton University, United States of America

Richard R. Schrock

MIT Massachusetts Institute of Technology, United States of America

Carla Casadevall Serrano

University of Cambridge, United Kingdom

Moderator: Claire O'Connell

Freelance Science Writer, Ireland

16.30

Break**Open Exchange****Open Exchange with Avram Hershko**

17.00

Inselhalle

Lessons From the Discovery of the Ubiquitin System

Discussion with young scientists

Open Exchange**Open Exchange with Michael Levitt**

17.00

Inselhalle

Discussion with young scientists

Open Exchange**Open Exchange with Hartmut Michel**

17.00

Hotel Bayer. Hof

Discussion with young scientists

Open Exchange**Open Exchange with Dan Shechtman**

17.00

Hotel Bayer. Hof

Discussion with young scientists

Open Exchange**Open Exchange with Arieh Warshel**

17.00

Inselhalle

Discussion with young scientists

Open Exchange**Open Exchange with Kurt Wüthrich**

17.00

Hotel Bayer. Hof

Discussion with young scientists

Open Exchange Online**Open Exchange Online with Elizabeth H. Blackburn**

17.00

Zoom

Discussion with young scientists

*Host: Nataly Nasr Al Deen**Washington University St. Louis, United States of America*See live.lindau-nobel.org for details.**Open Exchange Online****Open Exchange Online with Rudolph A. Marcus**

17.00

Zoom

Discussion with young scientists

*Host: Katharina Ehrmann**Queensland University of Technology (QUT), Australia*See live.lindau-nobel.org for details.

18.30

Break**Heidelberg****Lecture**

19.00

Inselhalle

Mathematics: Science or Art?

Efim I. Zelmanov

*University of California, San Diego, United States of America***Social Event****Dinner**

19.45 - 21.30

Inselhalle

Access: young scientists





Present Your Research
NEXT GEN SCIENCE

Monday, June 27, 17.00 CEST
Wednesday, June 29, 09.00 CEST

Morning Workout Mobilate

07.00
Oscar-Groll-Anlage

Partner Event Hydrogen: Energy Carrier and Fuel for a Sustainable World

07.00
Hotel Bayer. Hof


hosted by Toyota Mobility Foundation

Nobuhiko Koga
Chief Officer, Frontier Research Center, Toyota Motor Corporation, Japan

Hartmut Michel
Max Planck Institute of Biophysics, Germany

Julia Müller-Hüllstede
German Aerospace Center (DLR), Germany

Moderator: Werner Tillmetz
University of Ulm, Germany
hzconnect.eco Bodensee

Lecture Toward Universal Catalysts for Selective Synthesis

09.00
Inselhalle

Benjamin List
Max-Planck-Institut für Kohlenforschung, Germany

Lecture Molecular-Scale Resolution in Fluorescence Microscopy

09.30
Inselhalle

Stefan W. Hell
Max Planck Institute for Multidisciplinary Sciences, Germany

Lecture Perspectives in Chemistry – Supramolecular Chemistry And Beyond

10.00
Inselhalle

Jean-Marie Lehn
University of Strasbourg, France

10.30 Break**Lecture Materials for the Future**

11.00
Inselhalle

Sir Konstantin S. Novoselov
National University of Singapore, Singapore

Lecture Tackling Parkinson's Disease With Basic Science

11.30
Inselhalle

Randy W. Schekman
University of California, Berkely, United States of America

Life Lecture The Everest Beyond the Everest


12.00
Inselhalle

Ada E. Yonath
Weizmann Institute of Science, Israel

12.45 Lunch Break

12.45
Inselhalle


13.00 Laureate Lunches

13.00
Various Locations


Access: Nobel Laureates, young scientists with online pre-registration only.
Please see your personal agenda for details.

Science Walks Science Walks

14.45

Meeting Point: main entrance of the Inselhalle.
Access: Nobel Laureates, young scientists with online pre-registration only.
Please see your personal agenda for details

Open Exchange Open Exchange with Stefan W. Hell

15.00
Inselhalle

Discussion with young scientists

Open Exchange Open Exchange with Jean-Marie Lehn

15.00
Inselhalle

Discussion with young scientists

Open Exchange Open Exchange with Benjamin List

15.00
Inselhalle

Discussion with young scientists

Open Exchange**Open Exchange with Sir Konstantin S. Novoselov**

15.00

Discussion with young scientists

Hotel Bayer. Hof

Open Exchange**Open Exchange with Randy W. Schekman**

15.00

Discussion with young scientists

Hotel Bayer. Hof

Open Exchange**Open Exchange with Ada E. Yonath**

15.00

Discussion with young scientists

Inselhalle

16.30

Break**Workshop****Lindau Guidelines**

17.00

Elizabeth H. Blackburn

Forum am See

University of California, San Francisco, United States of America

Christian Schumacher

RWTH Aachen, Germany

Moderator: Wolfgang Huang

*Director Executive Secretariat, Lindau Nobel Laureate Meetings***Workshop****Mentoring**

17.00

Michael Mărgineanu

Hotel Bayer. Hof

Victor Babeş University of Medicine, Romania

Ben Nelson

Minerva University, United States of America

Sir Konstantin S. Novoselov

National University of Singapore, Singapore

Iris Odstricil

Friedrich Miescher Institute for Biomedical Research (FMI), Switzerland

Moderator: Karan Khemka

Director in Global Education Companies And Institutions

18.30

Break**Social Event**

19.00 - 22.00

Inselhalle

**Bavarian Evening***hosted by the Free State of Bavaria***Welcome***Countess Bettina Bernadotte, President of the Council***Welcome Address***Government of the Free State of Bavaria***Bavarian Music & Folk Dance***ser Blech**Trachtenverein Altusried***Bavarian Dinner****Online Event**

19.00 - 22.00

Interactive Bavarian Evening with Brian MalowSee live.lindau-nobel.org for details.



Blast from the Past
BAVARIAN
BREAKFAST 1953

70 years ago, the Bavarian Evening was actually a Bavarian Breakfast. Until today, a decent amount of beer and "weisswurst" are common during such a breakfast, as demonstrated in this picture by Nobel Laureate Hideki Yukawa and his wife Sumi.

Social Event

07.45

MS Sonnenkönigin

Baden-Württemberg Boat Trip to Mainau Island*hosted by the State of Baden-Württemberg*

Note for all participants departing on Friday and not returning to their hotel: no luggage may be taken on the boat. Two luggage lorries will be available at Lindau Harbour; please place your luggage accordingly.

Lorry 1 to "Mainau Island": for those not returning to Lindau. Pick-up is at main entrance on Mainau Island until 17.00 hrs.

Lorry 2 to "Lindau": for those leaving directly after their return to Lindau. Pick-up is at Lindau Harbour immediately after arrival.

07.15

Lindau Harbour

Check-in (Lindau)

07.45

Lindau Harbour

Departure (Lindau)

08.00

Bad Schachen

Arrival (Hotel Bad Schachen)

08.15

Bad Schachen

Departure (Hotel Bad Schachen)

08.30

**Welcome**

Andrea Lindlohr

State Secretary at the Ministry of Regional Development and Housing, Ministry of Regional Development and Housing of Baden-Württemberg, Germany

10.20

Mainau Island

Arrival (Mainau Island)

11.00

Mainau Island
Castle Meadow**Welcome on Mainau Island**

Countess Bettina Bernadotte, President of the Council

Closing**Panel Discussion**

11.10

Mainau Island
Castle Meadow**The Diversity Challenge**

Aybeg Nafiz Güneç

Georg-August-Universität Göttingen/Max Planck Institute for Biophysical Chemistry, Germany

Vanessa Restrepo Schild

Bio-Techne, United Kingdom

Donna Strickland

University of Waterloo, United States of America

Pernilla Wittung-Stafshede

Chalmers University of Technology, Sweden

Moderator: Paul Walton

University of York, United Kingdom

12.30

Mainau Island
Castle Meadow**Conclusion & Farewell**

Countess Bettina Bernadotte

President of the Council

Andrea Lindlohr

State Secretary at the Ministry of Regional Development and Housing, Ministry of Regional Development and Housing of Baden-Württemberg, Germany

13.00

Mainau Island
Arboretum**Science Picnic on the Arboretum Lawn**

hosted by the Ministry of Science, Research and the Arts, State of Baden-Württemberg



16.00

Mainau Harbour

Boarding

16.30

Mainau Harbour

Departure (Mainau Island)**Baden-Württemberg Boat Trip to Lindau & Alumni Party**

hosted by the State of Baden-Württemberg

18.30

Bad Schachen

Arrival (Hotel Bad Schachen)

19.00

Lindau Harbour

Arrival (Lindau)



Now or Never CONNECT

The boat rides on the closing day are the perfect opportunity to connect to your peers. They are all there.

Afterwards, use the Lindau Alumni Network and Lindau Mentoring Hub to stay in touch.





„Hydrogen Meets Science“

This is the headline of our exhibition, which is taking place in front of Lindau Inselhalle on Thursday, June 30th, dedicated to the participants of the 71st Lindau Nobel Laureate Meeting, and on Friday, July 1st, 2022 for the general public, too. For further details, please check our website.

What is the background of our event?

Today's world is powered by oil, gas and coal. 80% of our energy consumption is based on fossil fuels: for mobility and transportation, house heating, electricity for all purposes as well as for the production of many of our industrial products. This is leading to air pollution and global warming with dramatic consequences for all our lives and our global society.

Our biggest challenge in the coming years is the fast transition into an energy supply dominantly based on very unevenly - temporally as well as geographically - available renewables, not meeting the need-based demand of the end user. The dominant green energy carrier of the future will be hydrogen and its easy to produce derivatives like methanol (e-fuel).

Since more than a hundred years, we have become so familiar with technologies based on fossil fuels. The transition to new green technologies is very revolutionary for all of us. The world's largest industries have to completely change their entire product portfolios. Our network **h2connect.eco** is supporting our region during this change by sharing valuable information and connecting people.

How can science support this transition?

The industrialization of the new green technologies has just started. Advanced technologies and a variety of scientific contributions will be essential to create a sustainable world based on renewable energies in all applications.

Join our event - we are very happy to meet you

Your h2connect.eco team: <https://h2connect.eco>

For any questions: info@h2connect.eco

The Meetings

The Lindau Nobel Laureate Meetings – established in 1951: 70 years ago – provide a globally recognised forum for exchange between Nobel Laureates and young scientists. They inspire scientific generations and build sustainable networks of young scientists around the world.

The original idea of the meetings goes back to the two Lindau physicians Dr. Franz Karl Hein and Professor Dr. Gustav Wilhelm Parade as well as Count Lennart Bernadotte af Wisborg, a member of the Swedish royal family who quickly became the spiritus rector of the Lindau Meetings. It was them who recognised very early the significance of the meetings for the reconciliation of the people of post-war Europe and thus systematically developed them to an international forum for the exchange of knowledge between nations, cultures and disciplines.

The Organisers

The Council for the Lindau Nobel Laureate Meetings and the Foundation Lindau Nobel Laureate Meetings organise the annual one-week events. The executive secretariat is responsible for planning and realisation. Countess Bettina Bernadotte af Wisborg is president of the Council, which sets the course for the Lindau Meetings' concept and programme. Internationally accredited scientists from the fields of medicine, physics, chemistry and the economic sciences are members of the Council. The work of the Council benefits from the commitment of the secretaries of the assemblies responsible for awarding the Nobel Prizes, which are represented in the Council.

The Foundation was established in the year 2000 by the Council and the Bernadotte family on the initiative of 50 Nobel Laureates. Following Prof. Wolfgang Schürer, since 2016 Prof. Dr. Jürgen Kluge serves as the chairman of the board of the Foundation. Joint initiatives regarding the advancement of the Lindau Meetings and the establishment of an international network of academic partners are key priorities in addition to ensuring sustainable funding.

The Lindau Meetings enjoy widespread support. More than 350 Nobel Laureates are members of the Founders' Assembly of the Foundation and demonstrate – through their membership and their engagement with the Lindau Spirit – their support for the mission of the Lindau Nobel Laureate Meetings.

Personalities from the worlds of science, politics and industry have been inaugurated into the Foundation's Honorary Senate in recognition of the special commitment they have shown towards scientific excellence and the promotion of young scientists.

Funding of the Lindau Nobel Laureate Meetings

The Lindau Nobel Laureate Meetings are made possible thanks to the support received from supranational, national and state bodies, companies, associations and private patrons. International companies, selected foundations, associations and private maecenates assure the financial basis for the Lindau Meetings by making donations to the assets of the Foundation Lindau Nobel Laureate Meetings. Interest earned on the endowment, plus additional annual contributions by benefactors cover the budget of the Lindau Meetings. Donations in kind also play an important role in raising the professional level of the meetings. Not least, the success of the Lindau Meetings can also be attributed to the commitment shown by the Nobel Laureates, members of the Council and the board of the Foundation during the preparation, realisation and evaluation of the meetings. A full list of supporters is enclosed in this programme.

The Academic Partners Network

The Lindau Nobel Laureate Meetings interact closely with a global network of academic partners to identify highly-talented young scientists and to nominate them for participation. Partners include national academies of science, ministries, research institutions, top-ranking universities, foundations and international scientific organisations. Without this support, the Lindau Nobel Laureate Meetings would not be able to identify and invite the most gifted scientific talents worldwide.

The world's best young scientists of tomorrow submit applications to attend the Lindau Nobel Laureate Meetings. An international, multi-stage selection process guarantees that the scientific elite of the future is able to gather with the Nobel Laureates in Lindau. Every year, several thousand young scientists apply worldwide.

Programme Session Types

The formats of the varied scientific programme are based on the principle of dialogue and to activate the exchange of knowledge, ideas, and experience between and among Nobel Laureates and young scientists.

Lectures

Lectures are given by Laureates only. They may choose a topic of their liking – be it their Nobel Prize research, be it something else.

Agora Talks

Flexible and interactive. One laureate presenting or several Laureates interacting in presentation/discussion of a topic; in both cases, a qualified moderator leads Q&A from the audience, discussion or even an interview.

Panel Discussions

Several panellists jointly discuss one topic. Up to half of the time is dedicated to Q&A with the audience.

Open Exchanges

Most Laureates offer discussion sessions, usually in addition to lectures and agora talks. These research-oriented discussions are strictly limited to laureates and young scientists, and switching between sessions should be avoided.

Next Gen Science Sessions

Oral presentations by young scientists. Each presentation is 10 minutes, followed by a short Q&A.

Workouts

Need a break? Join our workouts.

Partner Events & Partner Breakfasts

Partners of the Lindau Meetings are invited to organise side events outside the core programme, e.g., in the mornings (Partner Breakfasts) or evenings (academic dinners or others). As for the content of the presentations, several types are possible, e.g. panel discussion, world café, normal dinner, pitch presentations, etc. Attendance requires online pre-registration.

50 ABOUT THE MEETINGS

Science Breakfast

The Science Breakfast is an event organised by the Lindau Nobel Laureate Meetings. 2-5 Nobel Laureates make very short statements at the beginning, which are then jointly discussed by the audience at various tables.

Science Walks

During a Science Walk, Nobel Laureates spend their time exploring picturesque spots in Lindau and its surroundings together with up to ten young scientists. It is yet another opportunity for personal and informal discussions.

Laureate Lunches

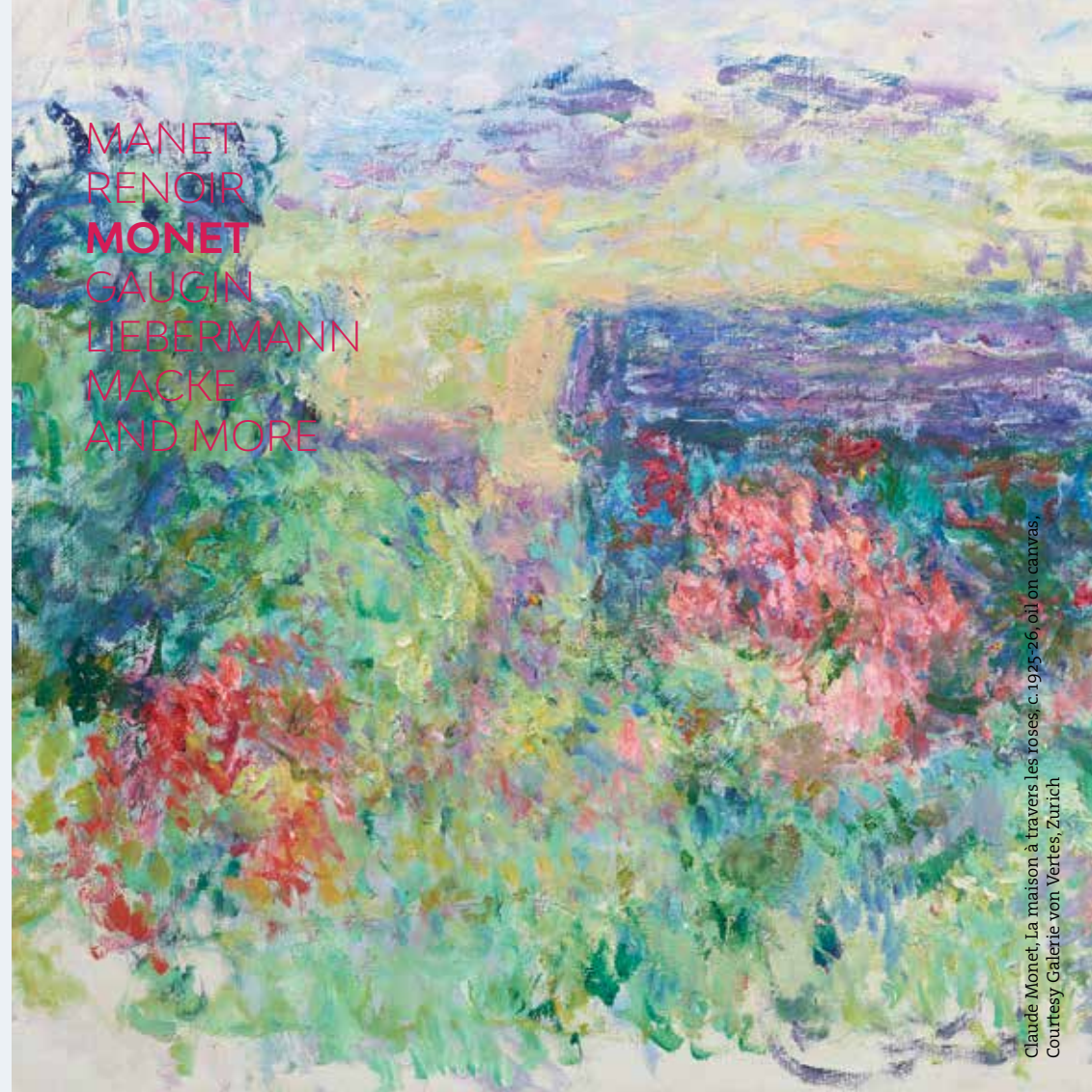
During a Laureate Lunch, a Nobel Laureate sits together with up to ten young scientists at a local restaurant in Lindau to talk informally over lunch.

Life Lectures

The Life Lecture intends to cover the life experiences of a Nobel Laureate rather than a scientific topic. It is designed to motivate and inspire the young audience and numbers among the emotional highlights of the Lindau Meeting's lecture programme.

Heidelberg Lecture

The Heidelberg Laureate Forum (HLF) was founded in 2013 by our long standing supporter and Honorary Senator Klaus Tschira after the model of the Lindau Nobel Laureate Meetings. The HLF dedicates its meetings to prize-winning and inspiring young scientists from mathematics and computer science. To emphasise the close links and the outstanding partnership, Lindau hosts Heidelberg Lectures every year, and Lindau Lectures are part of the HLF programme.



MANET
RENOIR
MONET
GAUGUIN
LIEBERMANN
MACKE
AND MORE

Claude Monet, La maison à travers les roses, c. 1925-26, oil on canvas, Courtesy Galerie von Vertes, Zurich

Mythical Nature

FROM
MONET TO
WARHOL

ART MUSEUM LINDAU

30 APRIL - 03 OCTOBER 2022

OPENING HOURS: 10.00 - 18.00 HRS

GOT QUESTIONS?

Visit qa.lindau-nobel.org to ask your questions during panel discussions and agora talks.

TWITTERATI

#LINO22
@lindaunobel

ABSTRACTS

Session abstracts are available at
[mediatheque.lindau-nobel.org/
abstracts/meeting-2022](https://mediatheque.lindau-nobel.org/abstracts/meeting-2022)
&
[mediatheque.lindau-nobel.org/
program/meeting-2022](https://mediatheque.lindau-nobel.org/program/meeting-2022)

ALUMNI NETWORK

Meet your peers at
alumni.lindau-nobel.org

MENTORING HUB

Interested in becoming
a mentor or a mentee?
mentoringhub.lindau-nobel.org

REWATCH

Most of the sessions will be available
afterwards in our mediatheque:

[mediatheque.lindau-nobel.org/
program/meeting-2022](https://mediatheque.lindau-nobel.org/program/meeting-2022)

IN-DEPTH COVERAGE

Check our blog for additional
in-depth coverage:
blog.lindau-nobel.org

The Lindau Nobel Laureate Meetings would like to thank all maecenates, patrons and donors for their contributions to the endowment of the Foundation.

PRINCIPAL MAECENATES

Klaus Tschira Stiftung gGmbH

Mars, Incorporated

MAECENATES

AstraZeneca

Bayer AG

Ecscientia Stiftung

Freistaat Bayern - Bayerisches Staatsministerium für Wissenschaft und Kunst

Robert Bosch GmbH

Rolex SA

SAP SE

Thomas Schmidheiny

Verband der Bayerischen Metall- und Elektroindustrie

PRINCIPAL PATRONS

Bertarelli Foundation

Carl Zeiss Stiftung

Monika and Wolfgang Schürer

National Research Foundation, Singapore

Novartis International AG

Siemens AG

Südwestmetall Verband der Metall- und Elektroindustrie Baden-Württemberg e. V.

Swiss Re Ltd

Verein der Bayerischen Chemischen Industrie e.V.

PATRONS

China-Singapore Guangzhou Knowledge City Investment and Development Co., Ltd

LafargeHolcim Ltd.

PRINCIPAL DONORS

Boehringer Ingelheim GmbH

Carl Zeiss AG

Croucher Foundation

Hansjörg Wyss Medical Foundation

Jacobs Foundation

Jörnvall Foundation

Klaus and Renate Gehrig

maxingvest ag (Tchibo Holding AG)

Merck KGaA

Synthes-Stratec Inc.

The Vallee Foundation Inc.

Verband der Chemischen Industrie e.V. (VCI)

DONORS

Alexander and Katalin Dembitz	Johann Deisenhofer and Kirsten Fischer
Andreas J. Büchting	Lindahl
AnneMarie Lynen	John Robin Warren
Artur Fischer	Jörn Wilkening
Astrid und Carl-Thomas Epping	Lemann Foundation
Bert Sakmann	Leopoldina Nationale Akademie der Wissenschaften
Brian P. Schmidt	Lindau Alumni Fund
Charles Townes	Lyndon L. Olson and Mrs. Olson
Christian de Duve	Maja Dornier
Christopher Schläffer	Martin Hellwig
Daniel and Greta Wilm	Paul Crutzen
Edmond H. Fischer	Paula Jean Hirsch
ETO GRUPPE	Peter D. Dornier
Eva Lynen	PwC PricewaterhouseCoopers AG
Familie Franz Karl Hein	Richard C. Barker
Familie Graf Lennart Bernadotte af Wisborg	Robert Stolze
Florian Budde	Ruth Schilling
Fondazione Fidinam	Salus Charity Foundation
Fredy and Regula Lienhard	Simon W. and Alice I. Newman
Fresenius SE & Co. KGaA	Sparkasse Memmingen-Lindau-Mindelheim
Gabriele David	Stiftung GAMBIT
Gary L. and Fang Bridge	Stiftung Hilfe zur Selbsthilfe
George Pinto	Ulrich B. Stoll
Heinz and Heide Dürr Stiftung	Werner Arber
Hendrik Leber and Claudia Giani-Leber	William E. and Sharon Moerner
Herbert Lütkestratkötter	Zülow AG
Innovative Business Foundation Ltd.	Zumtobel Lighting GmbH
Jack Steinberger	Anonymous endowment contributors
Jerome Karle	and the Friends of the Foundation
Joachim and Bärbel Milberg	
Joachim Dübner	

THE LINDAU GUIDELINES

01 Adopt an Ethical Code

02 Cooperate Globally on Global Problems

03 Share Knowledge

04 Publish Results Open Access

05 Publish Data to Repositories

06 Work Transparently & Truthfully

07 Change Reward Systems

08 Support All Talent

09 Communicate to Society

10 Engage in Education

SIGN
SUPPORT
SPREAD

lindauguidelines.org

The Lindau Nobel Laureate Meetings would like to thank all supporters of the 71st Lindau Nobel Laureate Meeting.

SIGNIFICANT MEETING BENEFACTORS

Bundesministerium für Bildung und Forschung (BMBF), Germany

C5 Capital

Dieter Schwarz Stiftung gGmbH

Klaus Tschira Stiftung gGmbH

Mars, Incorporated

Robert Bosch GmbH

Rolex SA

Verband der Chemischen Industrie e.V. (VCI)

PRINCIPAL BENEFACTORS

AKB Stiftung - Stiftung der Familie Carl-Ernst-Büchting

BASF SE

Bayer Science & Education Foundation

Bayerisches Staatsministerium für Wissenschaft und Kunst

Bundesministerium für Bildung, Wissenschaft und Forschung (BMBWF), Austria

Carl-Zeiss-Stiftung

Deutsche Forschungsgemeinschaft (DFG)

Foundation Lindau Nobel Laureate Meetings and their endowment contributors & Förderstiftung für die Lindau Nobel Laureate Meetings

International Lake Constance Conference (IBK)

Max-Planck-Gesellschaft zur Förderung der Wissenschaften e.V. (MPG)

Merck KGaA

National Research Foundation, Singapore

BENEFACTORS

Christa und Hermann Laur-Stiftung

Deutscher Akademischer Austauschdienst (DAAD)

Fraunhofer-Gesellschaft zur Förderung der angewandten Forschung e.V.

Gabriele David

Hans und Wolfgang Schleussner-Stiftung

Land Baden-Württemberg

Lennart-Bernadotte-Stiftung

Lindau Tourismus und Kongress GmbH

Mainau GmbH

Ministerium für Wissenschaft, Forschung und Kunst Baden-Württemberg

Obrist DE GmbH

Peter-Dornier-Stiftung

PwC PricewaterhouseCoopers AG

Roche Deutschland Holding GmbH

Sparkasse Schwaben-Bodensee

Stadt Lindau (B)

Stiftung Hilfe zur Selbsthilfe

Stiftung van Meeteren

The Nobel Foundation

Toyota Mobility Foundation

Warth & Klein Grant Thornton GmbH & Co. KG

Wilhelm Sander-Stiftung

Wissenschaftsgemeinschaft Gottfried Wilhelm Leibniz e.V.

CONTRIBUTORS

Bayerische Staatsbrauerei Weißenstephan

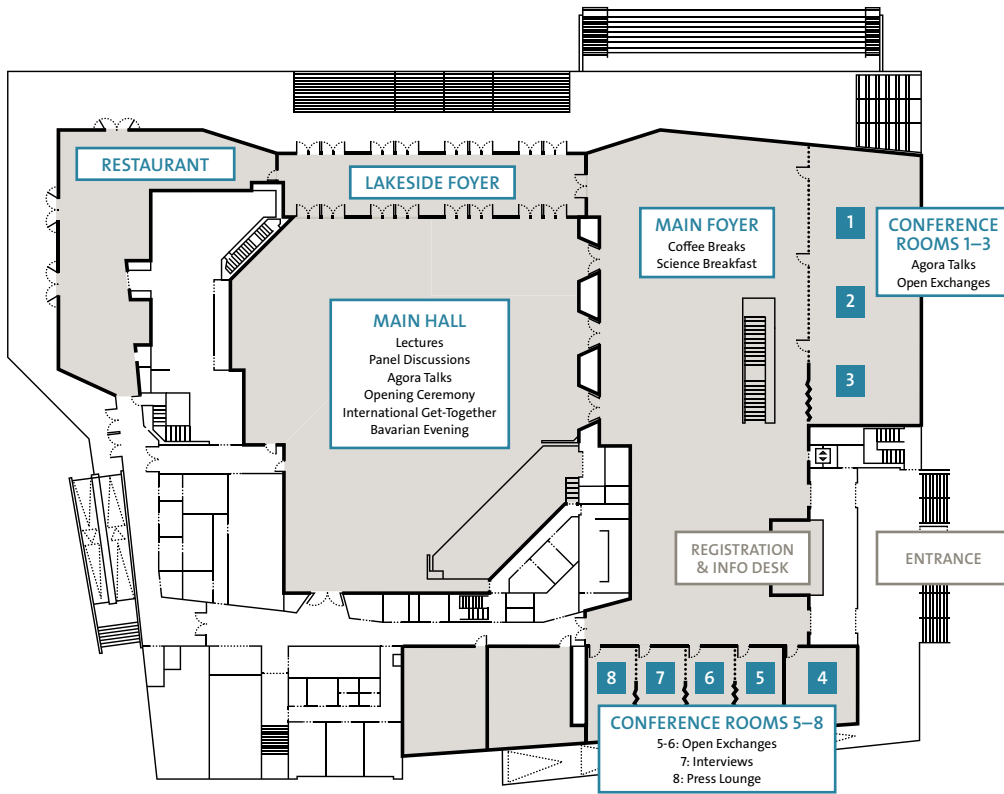
Mineralbrunnen Krumbach GmbH

SWS-Medicare GmbH

Tchibo GmbH

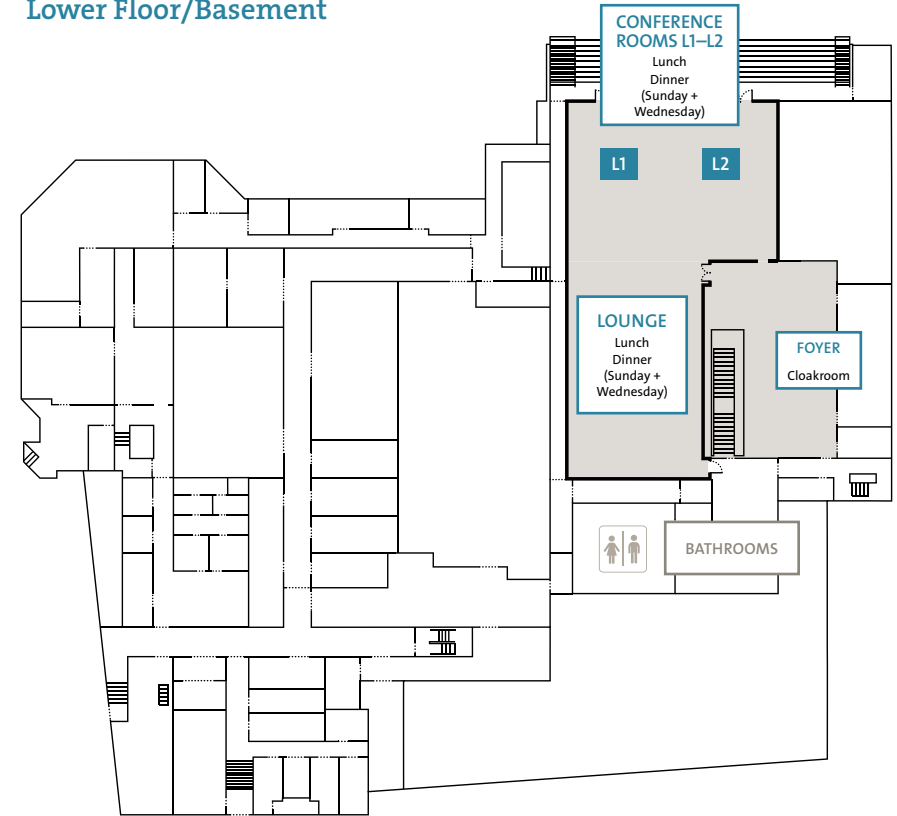
and anonymous benefactors

Ground Floor



What	Where
Agora Talks	Conference Rooms 1–3 and Main Hall
Bathrooms	Basement
Coffee Breaks	Main Foyer
Dinner	Various locations. In the Inselhalle: Lounge in the basement
Lectures	Main Hall
Lunch	Basement Laureate Lunches: various destinations
Next Gen Science	City Theatre & Inselhalle Main Hall

Lower Floor/Basement



What	Where
Open Exchanges	Conference Rooms 1–3 and 5–6
Panel Discussions	Main Hall
Partner Breakfasts	Hotel Bayerischer Hof, Forum am See
Press Lounge	Conference Room 8
Science Breakfast	Main Foyer
Science Walks	Meeting Point: Main Entrance of the Inselhalle
Social Events	Various locations. In the Inselhalle: Main Hall

PROGRAMME LOCATIONS



Inselhalle

Workout
(bad weather)

Toskanapark

Workout
(nice weather)


Kunstmuseum
am Inselbahnhof

Stadttheater

Forum am See

Hotel
Bayerischer Hof

Lindau Harbour

 Bus Stop

PROGRAMME RESTAURANTS

Valentin
In der Grub 28

Cantinetta
Chelles-Allee 1

Hotel Engel
Schafgasse 4

Bayerischer Hof
Seepromenade

Eilguthalle
Schützingerweg 2



Lindau - Bad Schachen/Meersburg/Konstanz

Lindau - Bregenz



Bus: How to Read the Time Table

The time table available at the front desk shows operating hours and departure times for all five lines and both directions. The first three columns (earliest, Saturday, Sunday) indicate when the earliest bus runs from each stop, while the fourth column shows the last service. The next column (every 30 min) shows when buses depart between the first and last service. Example: 24/54 means that this bus departs from the station every hour at minute 24 and 54 (e.g., at 15.24 hrs and 15.54 hrs). The two rightmost columns provide times for the night service.

Bus: Special Operating Hours During the Lindau Meeting

From Monday, 27 June to Thursday, 30 June the last buses leave from Inselhalle / the central connection point (ZUP) as follows:

Monday night, 27 June at 00.03 at Inselhalle / 00.10 at ZUP

Tuesday night, 28 June at 23.33 at Inselhalle / 23.40 at ZUP

Thursday night, 30 June at 23.03 at Inselhalle / 23.10 at ZUP

All buses serve all stops along their lines. All other bus lines run as listed in the time table.

Dietary Needs

Should you have any dietary needs, please make sure to check with our service desk or the catering service.

Medical Assistance

- In case of urgent, life-threatening medical issues, call 112 and/or contact any member of our staff.
- In case of urgent, but not life-threatening medical issues, please contact the paramedic teams on site or see our service desk.
- In case of non-urgent medical issues, please see our service desk.

RESPONSIBILITY

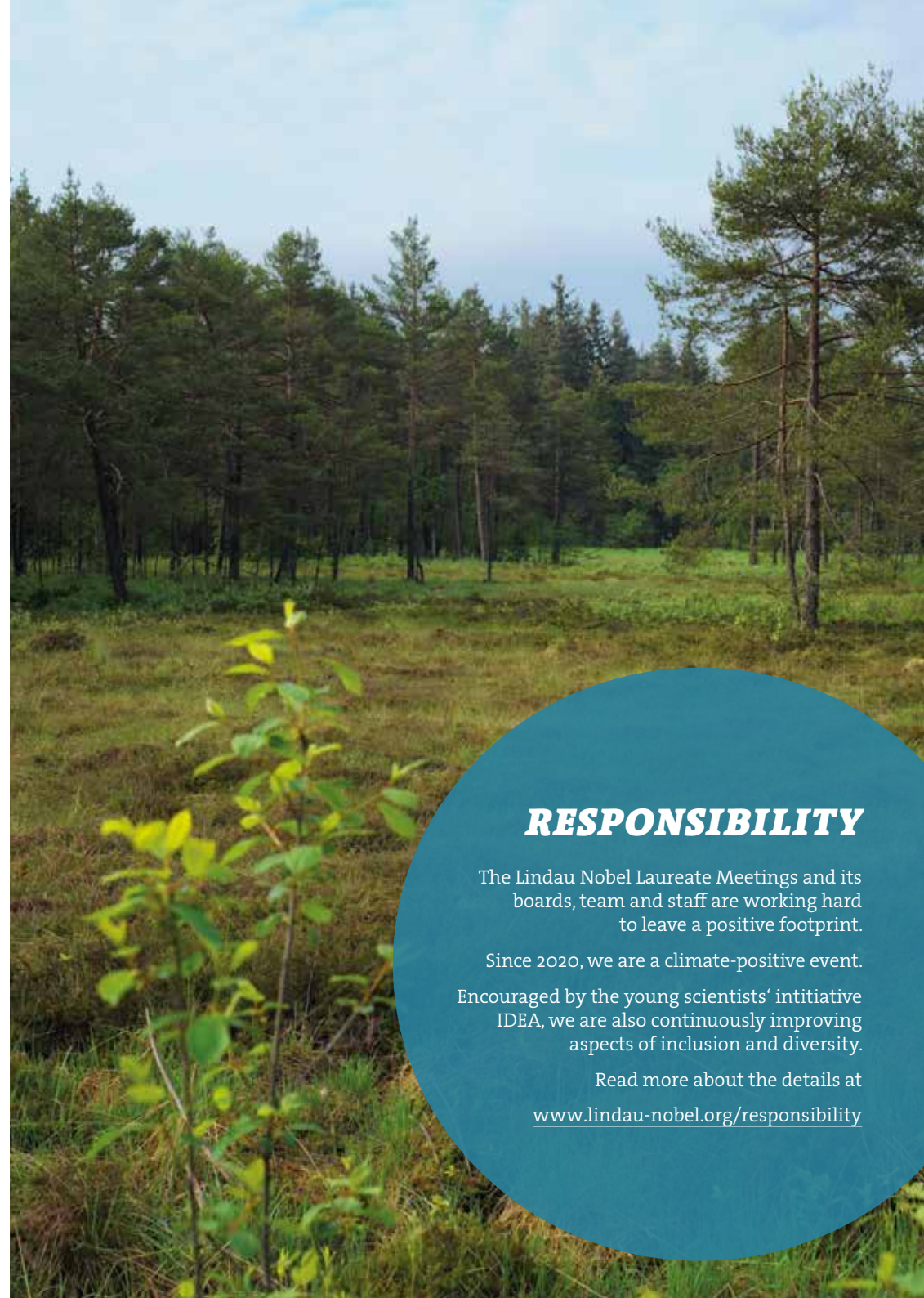
The Lindau Nobel Laureate Meetings and its boards, team and staff are working hard to leave a positive footprint.

Since 2020, we are a climate-positive event.

Encouraged by the young scientists' initiative IDEA, we are also continuously improving aspects of inclusion and diversity.

Read more about the details at

www.lindau-nobel.org/responsibility



Opening Hours Registration and Info Desk

Saturday, 25 June	13.00 – 18.00
Sunday, 26 June	08.30 – 19.00
Monday, 27 June	08.30 – 16.00
Tuesday, 28 June	08.30 – 17.30
Wednesday, 29 June	07.00 – 20.00
Thursday, 30 June	08.30 – 17.00

Opening Hours Press Desk

Sunday, 26 June	09.00 – 18.30
Monday, 27 June	08.30 – 18.30
Tuesday, 28 June	08.30 – 18.30
Wednesday, 29 June	08.30 – 18.30
Thursday, 30 June	08.30 – 19.00

On-site Contacts

The office can be reached during the meeting as follows:

Registration Desk	Tel +49 8382 8899 621
Press Desk	Tel +49 8382 8899 638
Email	info@lindau-nobel.org
Emergency	112
Taxi	Tel. +49 8382 5050 and +49 8382 3550

Lanyard Colour Key

Turquoise	Nobel Laureates, their partners and family members
Grey	Young Scientists
Blue	Visiting Scientists
Red	Guests
Yellow	Journalists
Lime Green	Host Families
Purple	Lindau Citizens
Orange	Contractors
Brown	Shuttle Service & External Service Providers
Green	Council & Foundation
Black	Staff of the Executive Secretariat

Scientific Chairpersons of the 71st Lindau Nobel Laureate Meeting

Wolfgang Lubitz

Director Emeritus

Max Planck Institute for Chemical Energy Conversion, Germany

Valeria Nicolosi

Professor

Trinity College Dublin, Ireland

Pernilla Wittung-Stafshede

Professor

Chalmers University of Technology, Sweden

Future Meetings

7th Lindau Meeting on Economic Sciences

23 August – 27 August 2022

72nd Lindau Nobel Laureate Meeting (Physiology/ Medicine)

25 June – 30 June 2023

73rd Lindau Nobel Laureate Meeting (Physics)

30 June – 5 July 2024

74th Lindau Nobel Laureate Meeting (Chemistry)

29 June – 4 July 2025

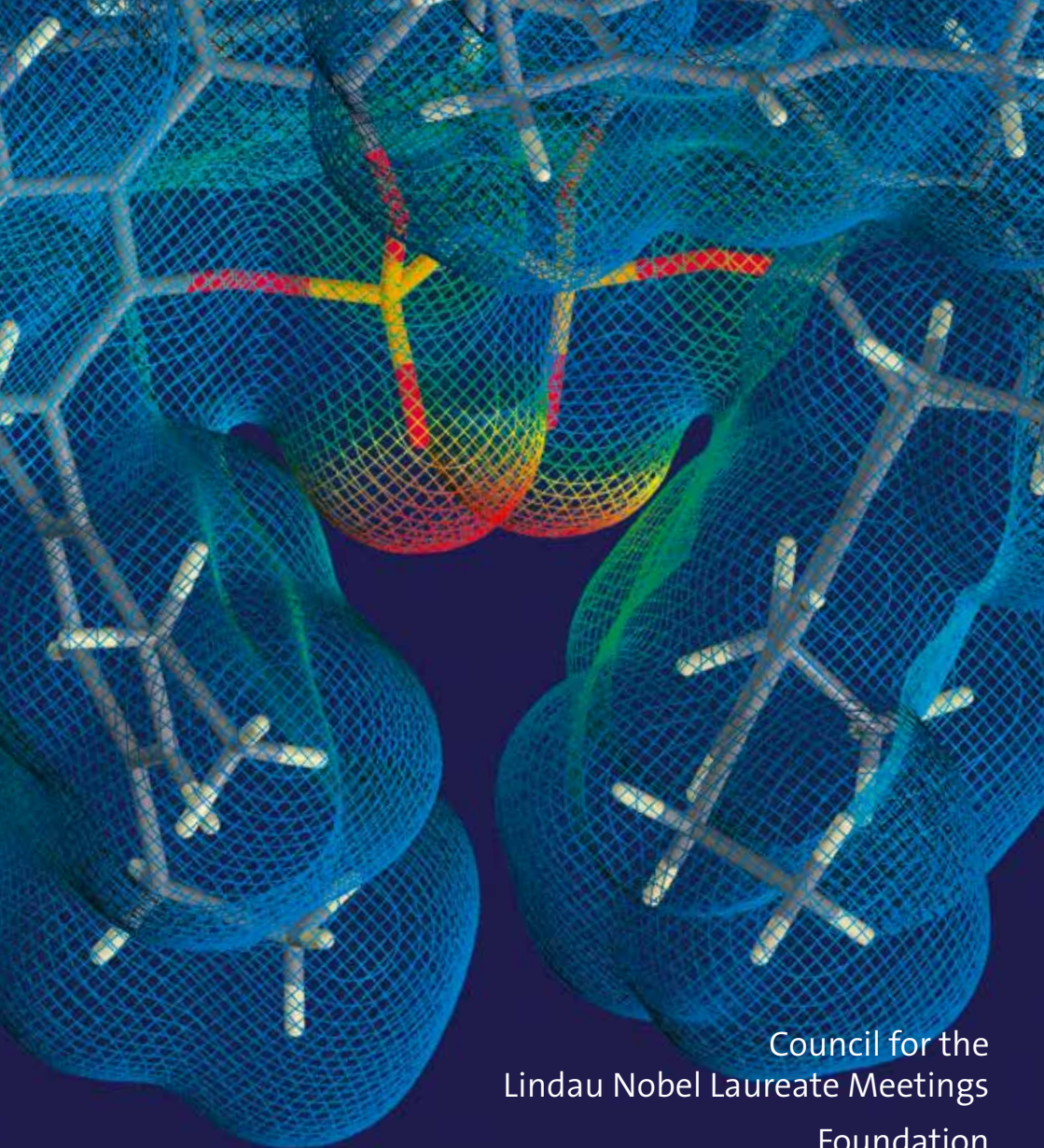
8th Lindau Meeting on Economic Sciences

26 August – 30 August 2025

75th Lindau Nobel Laureate Meeting (Interdisciplinary)

28 June – 3 July 2026





Council for the
Lindau Nobel Laureate Meetings

Foundation
Lindau Nobel Laureate Meetings

Alfred-Nobel-Platz 1
88131 Lindau
Germany

www.lindau-nobel.org